

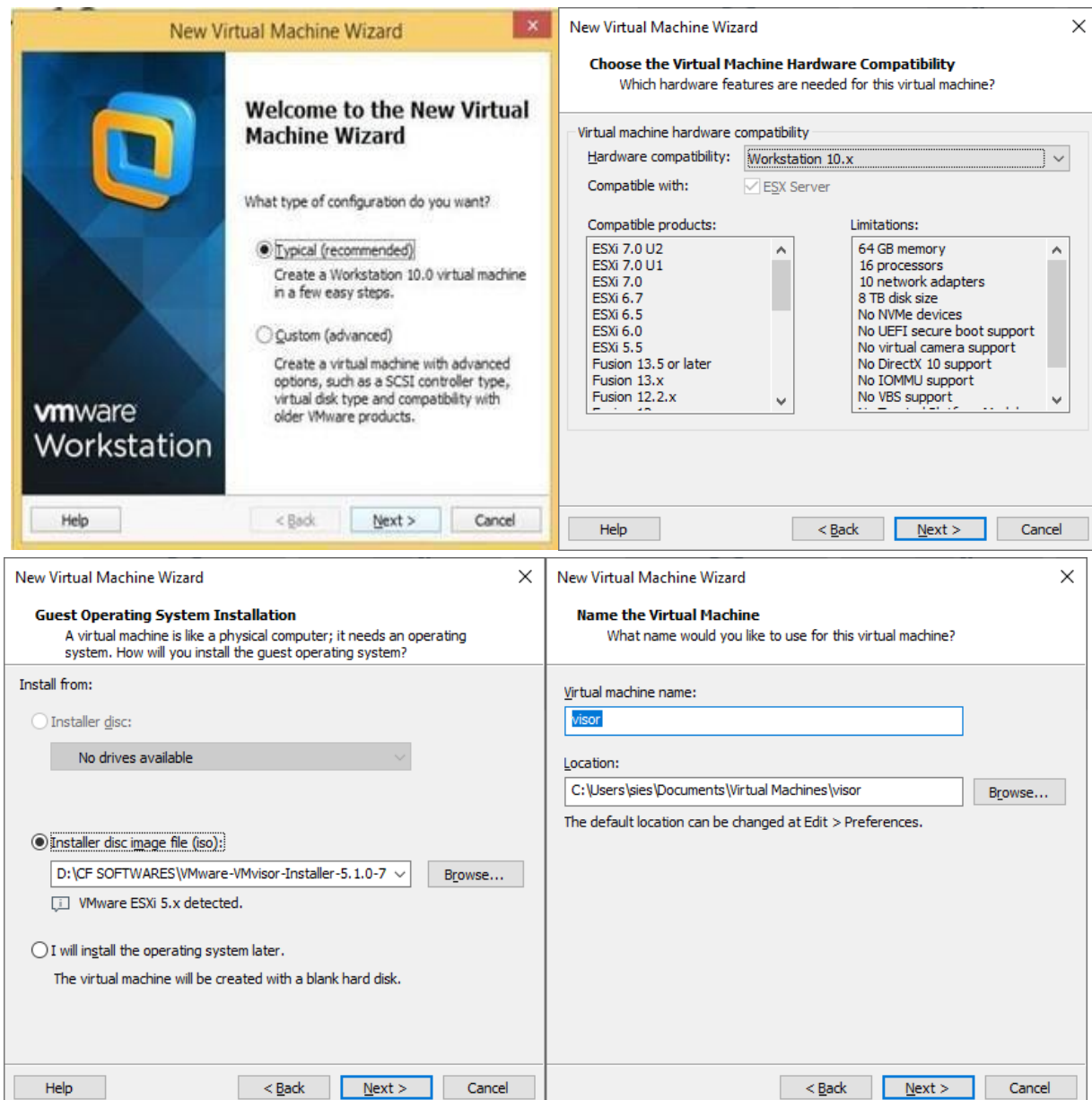
## PRACTICAL 2

**Aim: - Implement VMware ESXi Server with VSphere Client**

**File: - VMware-VMvisor-installer-5.1.0..... iso**

**Step: -**

**Step1: - Create a new VM.**



<p><b>New Virtual Machine Wizard</b></p> <p><b>Specify Disk Capacity</b> How large do you want this disk to be?</p> <p>Maximum disk size (GB): <input type="text" value="100"/></p> <p>Recommended size for VMware ESXi 5.x: 40 GB</p> <p><input type="checkbox"/> Allocate all disk space now. Allocating the full capacity can enhance performance but requires all of the physical disk space to be available right now. If you do not allocate all the space now, the virtual disk starts small and grows as you add data to it.</p> <p><input checked="" type="radio"/> Store virtual disk as a single file Split virtual disk into multiple files Splitting the disk makes it easier to move the virtual machine to another computer but may reduce performance with very large disks.</p> <p>Help &lt; Back Next &gt; Cancel</p>	<p><b>New Virtual Machine Wizard</b></p> <p><b>Specify Disk File</b> Where would you like to store the disk file?</p> <p>Disk file One 100 GB disk file will be created using this file name.</p> <p><input type="text" value="visor.vmdk"/> Browse...</p> <p>Help &lt; Back Next &gt; Cancel</p>
<p><b>New Virtual Machine Wizard</b></p> <p><b>Network Type</b> What type of network do you want to add?</p> <p>Network connection</p> <p><input checked="" type="radio"/> Use bridged networking Give the guest operating system direct access to an external Ethernet network. The guest must have its own IP address on the external network.</p> <p><input type="radio"/> Use network address translation (NAT) Give the guest operating system access to the host computer's dial-up or external Ethernet network connection using the host's IP address.</p> <p><input type="radio"/> Use host-only networking Connect the guest operating system to a private virtual network on the host computer.</p> <p><input type="radio"/> Do not use a network connection</p> <p>Help &lt; Back Next &gt; Cancel</p>	<p><b>New Virtual Machine Wizard</b></p> <p><b>Select I/O Controller Types</b> Which SCSI controller type would you like to use for SCSI virtual disks?</p> <p>I/O controller types</p> <p>SCSI Controller:</p> <p><input type="radio"/> BusLogic (Not available for 64-bit guests)</p> <p><input checked="" type="radio"/> LSI Logic (Recommended)</p> <p><input type="radio"/> LSI Logic SAS</p> <p><input type="radio"/> Paravirtualized SCSI</p> <p>Help &lt; Back Next &gt; Cancel</p>
<p><b>New Virtual Machine Wizard</b></p> <p><b>Select a Disk Type</b> What kind of disk do you want to create?</p> <p>Virtual disk type</p> <p><input type="radio"/> IDE</p> <p><input checked="" type="radio"/> SCSI (Recommended)</p> <p><input type="radio"/> SATA</p> <p><input type="radio"/> NVMe</p> <p><input type="checkbox"/> NVMe disks are not supported by VMware ESXi 5.x.</p> <p>Help &lt; Back Next &gt; Cancel</p>	<p><b>New Virtual Machine Wizard</b></p> <p><b>Select a Disk</b> Which disk do you want to use?</p> <p>Disk</p> <p><input checked="" type="radio"/> Create a new virtual disk A virtual disk is composed of one or more files on the host file system, which will appear as a single hard disk to the guest operating system. Virtual disks can easily be copied or moved on the same host or between hosts.</p> <p><input type="radio"/> Use an existing virtual disk Choose this option to reuse a previously configured disk.</p> <p><input type="radio"/> Use a physical disk (for advanced users) Choose this option to give the virtual machine direct access to a local hard disk. Requires administrator privileges.</p> <p>Help &lt; Back Next &gt; Cancel</p>

### New Virtual Machine Wizard

**Processor Configuration**  
Specify the number of processors for this virtual machine.

Processors

Number of processors:

Number of cores per processor:

Total processor cores: 2

### New Virtual Machine Wizard

**Memory for the Virtual Machine**  
How much memory would you like to use for this virtual machine?

Specify the amount of memory allocated to this virtual machine. The memory size must be a multiple of 4 MB.

Memory for this virtual machine:  MB

64 GB -  
32 GB -  
16 GB -  
8 GB -  
4 GB -  
2 GB -  
1 GB -  
512 MB -  
256 MB -  
128 MB -  
64 MB -  
32 MB -  
16 MB -  
8 MB -  
4 MB -

Maximum recommended memory: 6.0 GB

Recommended memory: 4 GB

Guest OS recommended minimum: 4 GB

Help < Back Next > Cancel

Help < Back Next > Cancel

Step2: - At the final window click on “Finish” button.

### New Virtual Machine Wizard

**Ready to Create Virtual Machine**  
Click Finish to create the virtual machine and start installing VMware ESXi 5.x.

The virtual machine will be created with the following settings:

Name: visor  
Location: C:\Users\sies\Documents\Virtual Machines\visor  
Version: Workstation 10.x  
Operating System: VMware ESXi 5.x

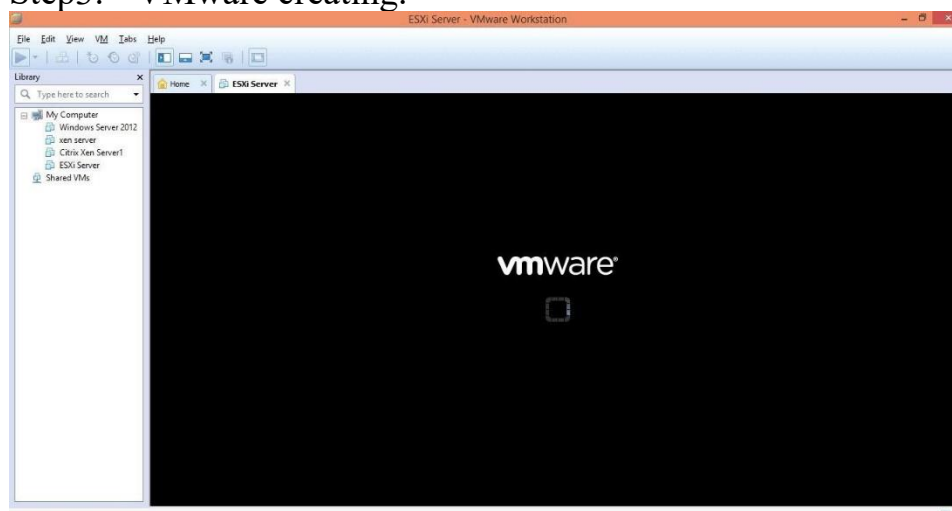
Hard Disk: 100 GB  
Memory: 4096 MB  
Network Adapter: Bridged (Automatic)  
Other Devices: 2 CPU cores, CD/DVD, USB Controller

[Customize Hardware...](#)

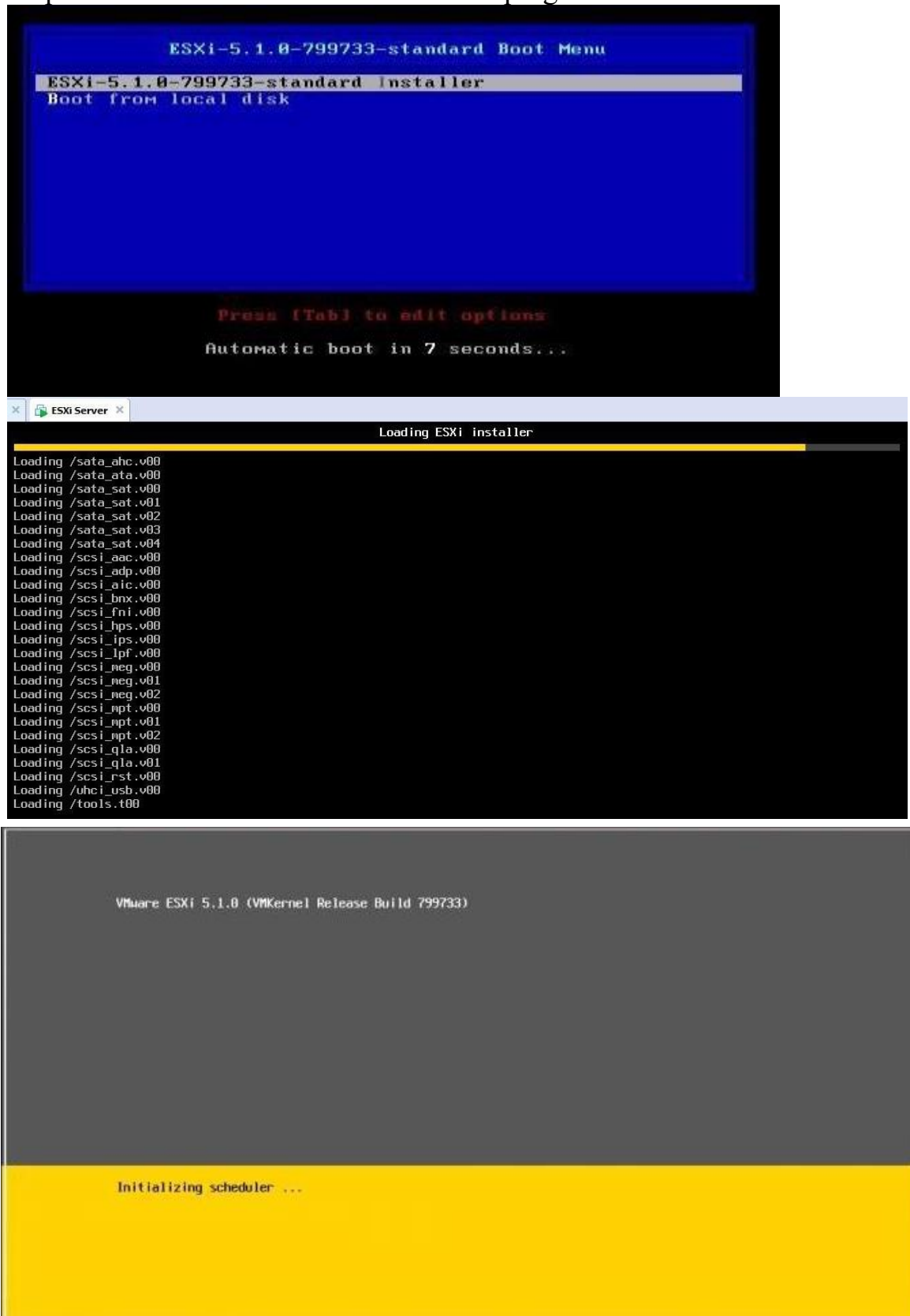
☒ Power on this virtual machine after creation

< Back Finish Cancel

Step3: - VMware creating.



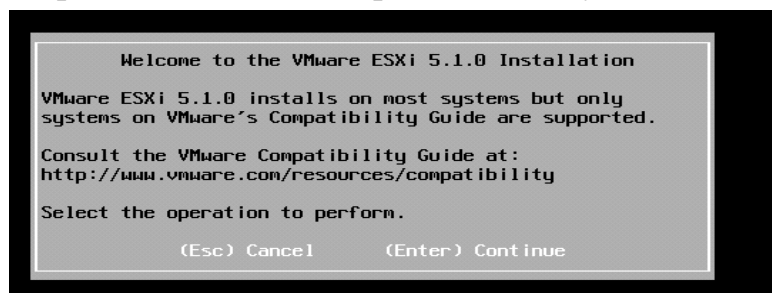
Step4: - Creation of Virtual Machine is in progress...



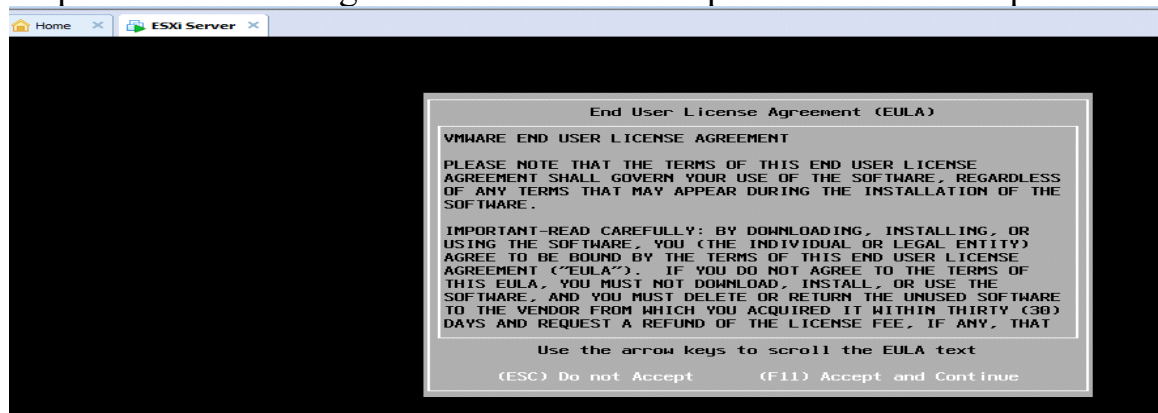
Step5: - In the following screen click on Continue or press Enter key.



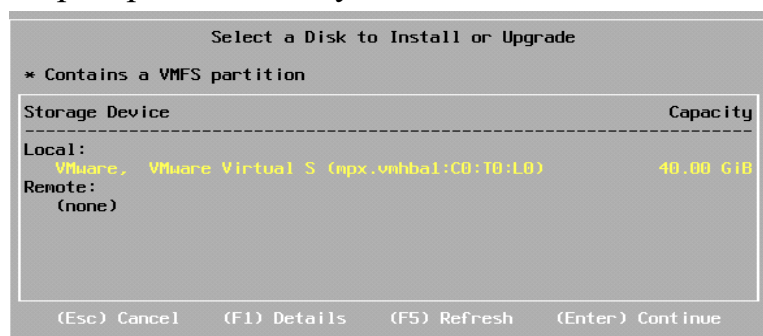
Step6: - For Installation press Enter key.



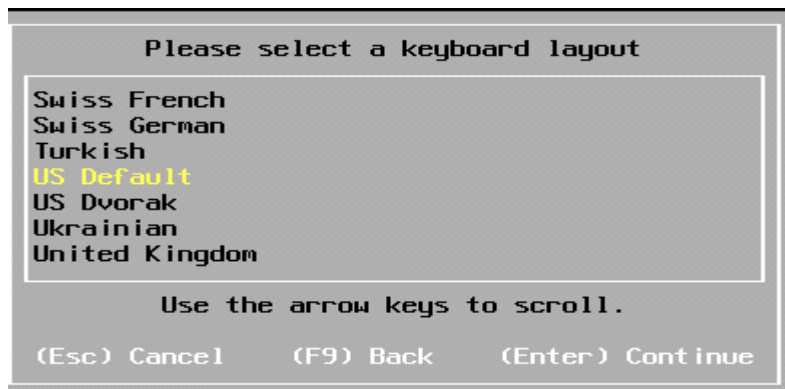
Step7: -For License Agreement click on "Accept and Continue" or press F11 key.



Step8: -press Enter key to Continue.



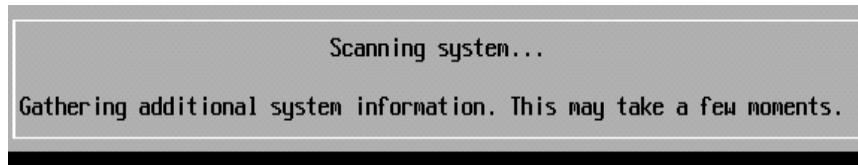
Step9: -Keep the default settings for keyboard settings and press Enter key.



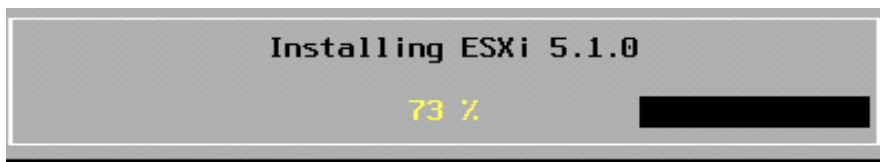
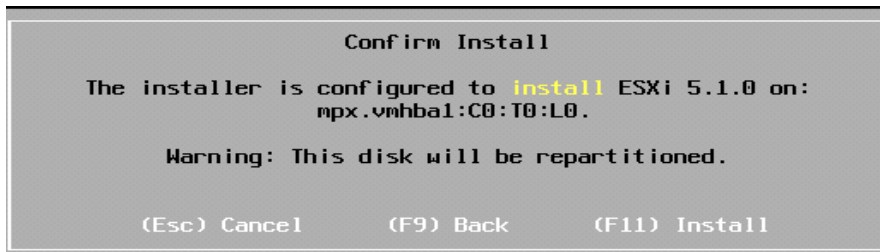
Step10: -Enter the root and confirmation password (1234567) and click on Continue or press Enter key.



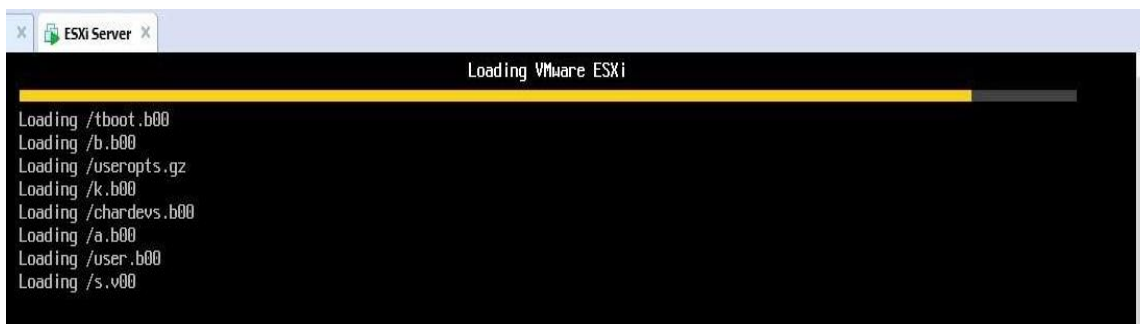
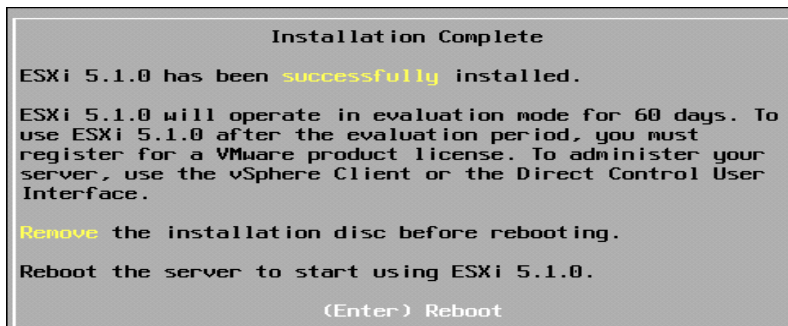
Step11: -The Installation is in progress...



Step12: -Press F11 key to Install. Installing ESXi 5.1.0...



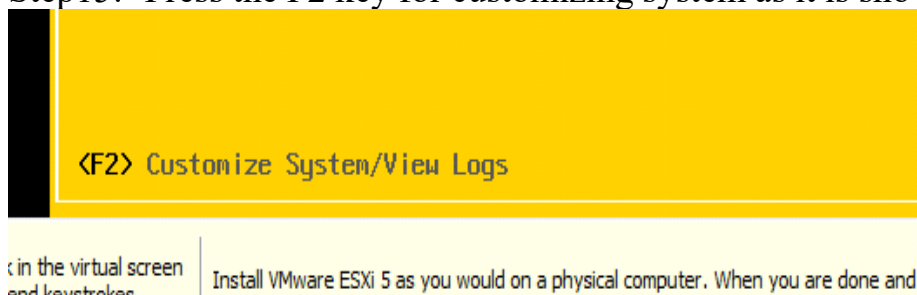
Step13: -Press Enter key to Reboot.



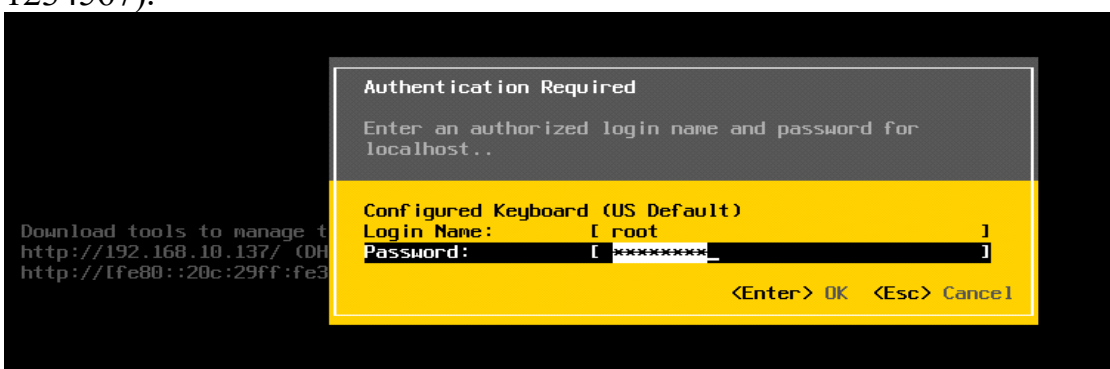
Step14: -Note the DHCP IP Address. Here it is-192.168.10.137



Step15: -Press the F2 key for customizing system as it is shown at the bottom of the VM.



Step16: -Enter the username as root and the root password (which was used earlier-1234567).





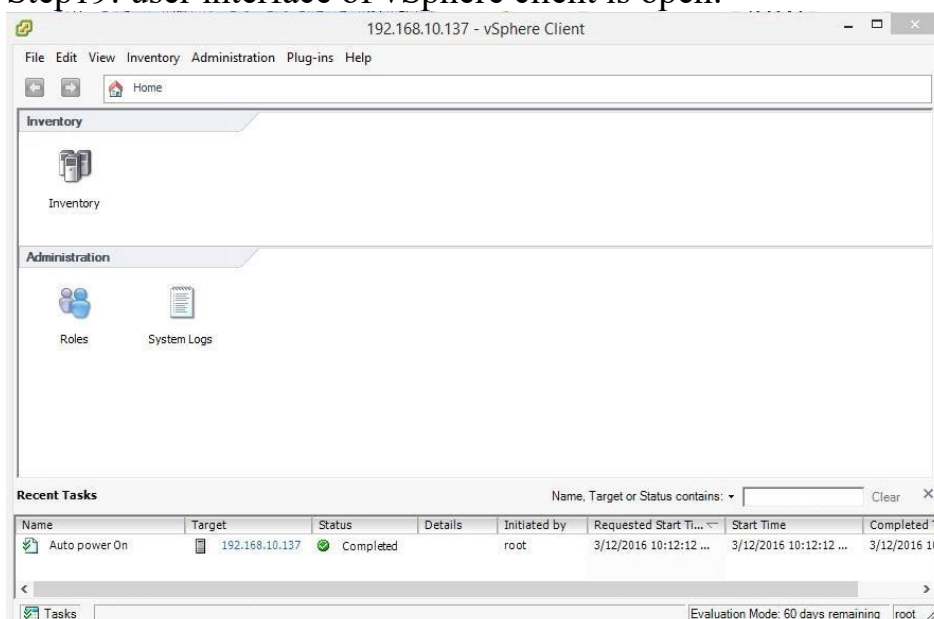
Step17: -Now start the VMware vSphere Client. Enter the IP address (*DHCP IP address of ESXi Server*), username as root and the same password as the ESXi System. Click on “Login” button.



Step18: -Click on the Ignore for the Security Warning.

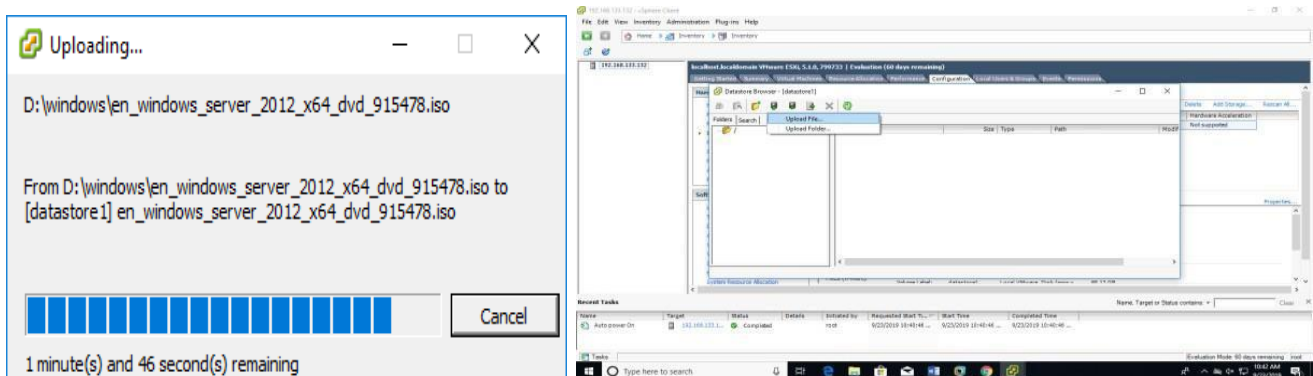
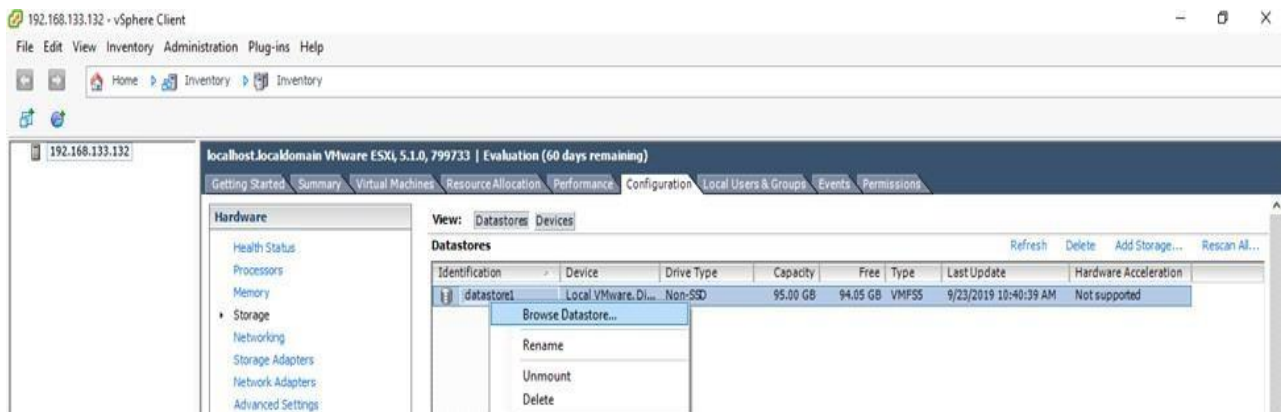


Step19: user interface of vSphere client is open.



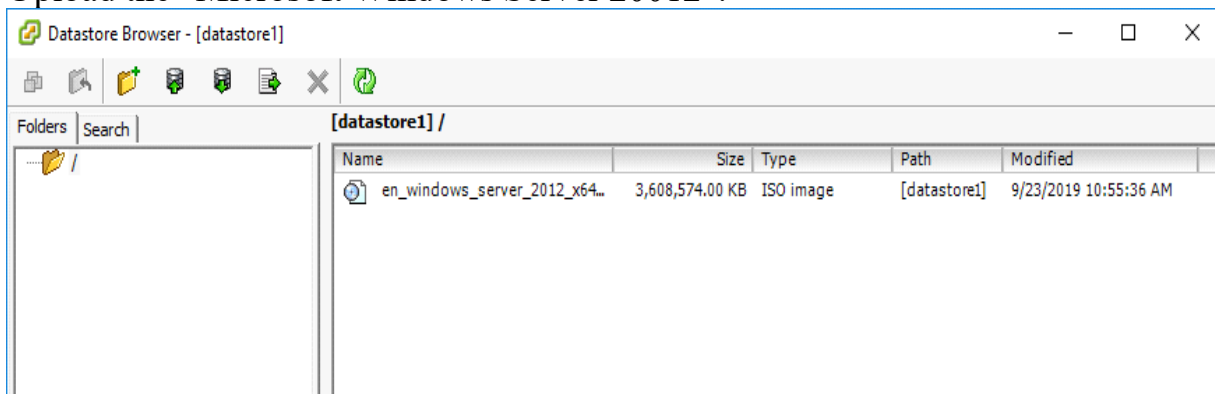
Step20: After login, the VMware vSphere Client looks like the following image. At the bottom of this screen the connectivity of VMware vSphere Client where the target IP address is the ESXi Server's DHCP IP address. Click on the Inventory.

In Configuration tab click on Hardware Storage. Right click on “datastore1” and select “Browse Datastore...”.

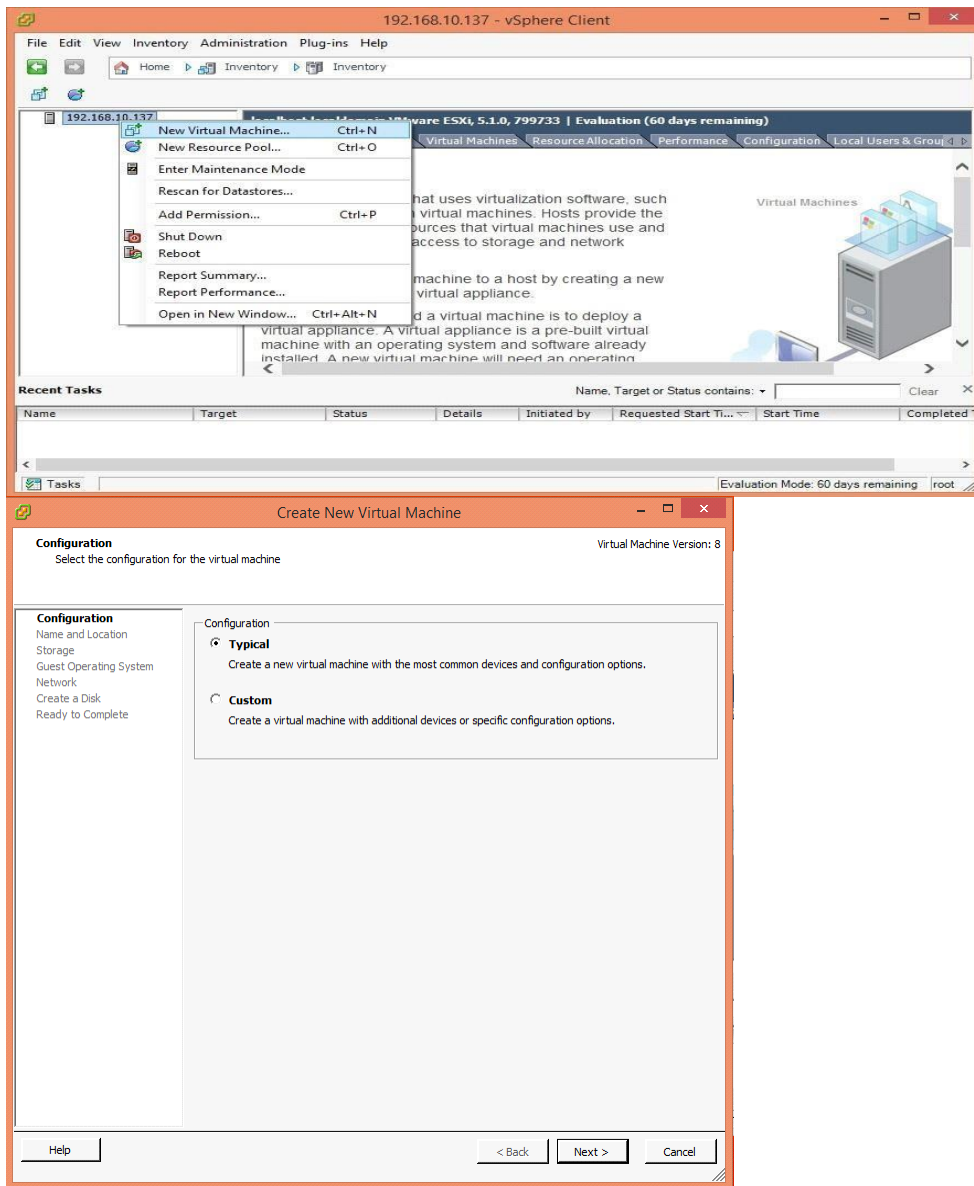


Step21: In the Datastore Browser – [datastore1] window click on Upload files to this datastore tool and select “Upload File...” option.

Upload the “Microsoft Windows Server 20012”.

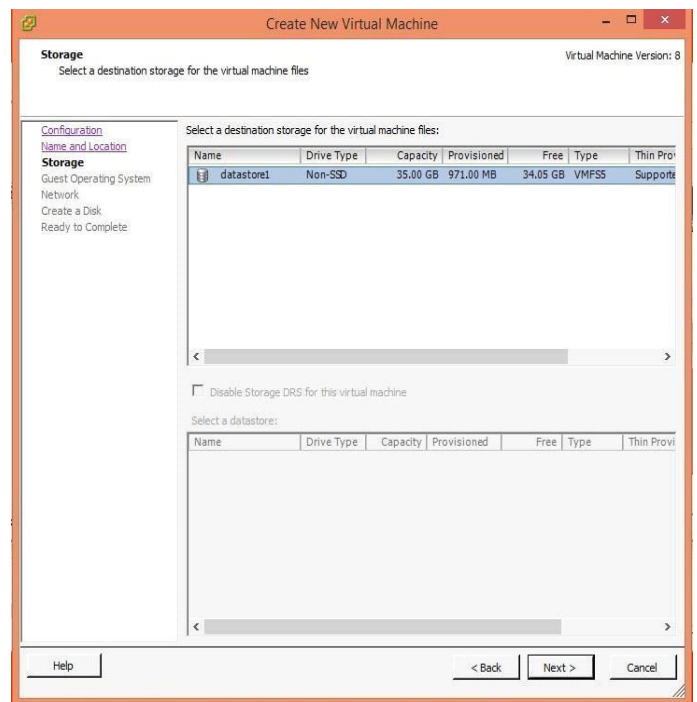
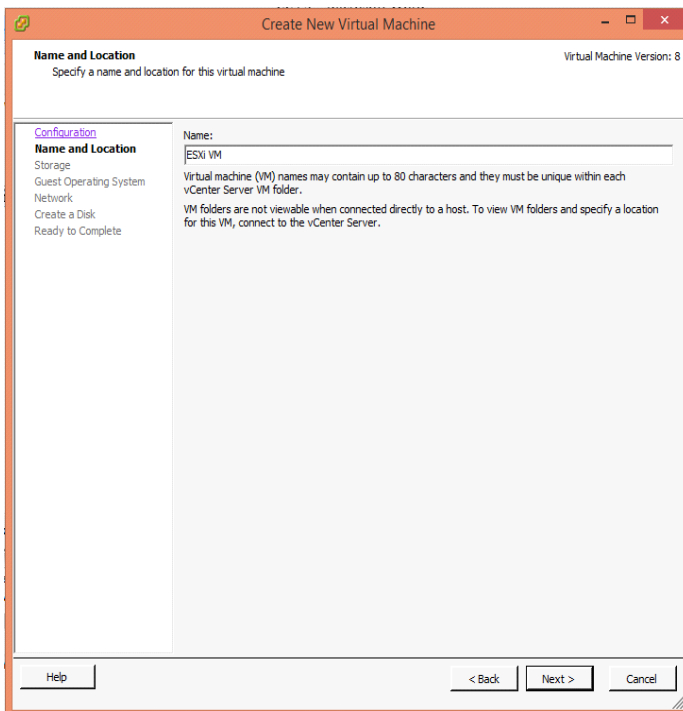


Step22: It shows the IP Address (192.168.10.137) listed on the left page. Right click on the IP address and select the option “New Virtual Machine....”

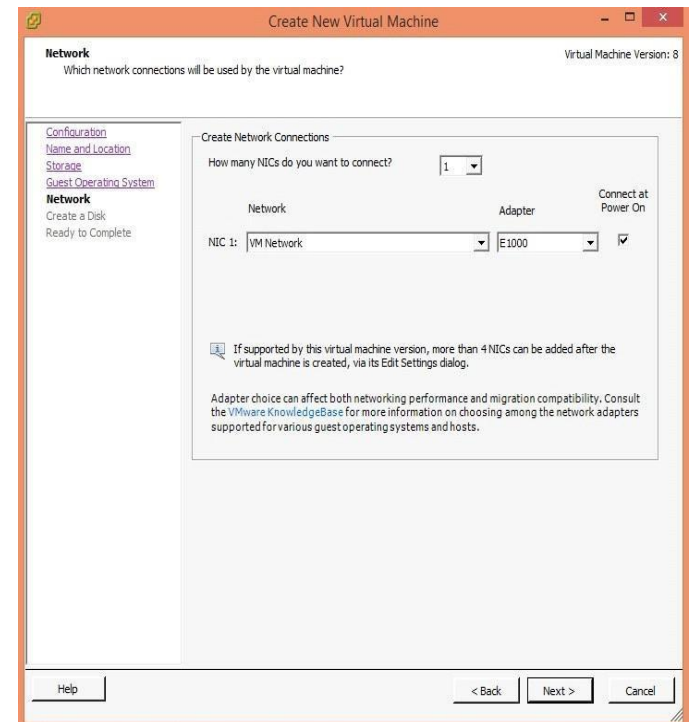
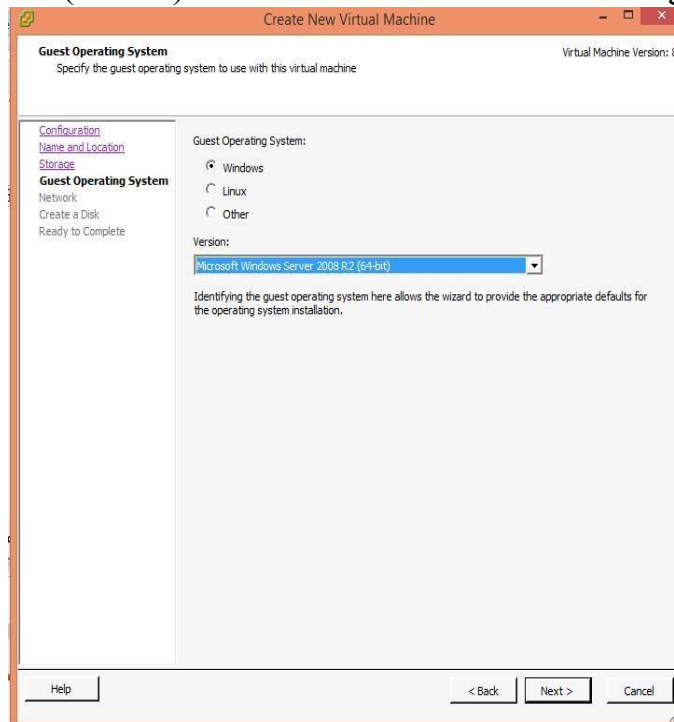


**Step23:** In the Create New Virtual Machine window select the Typical option and click on “Next.” Give a name to the Virtual Machine. Here it is given as ESXi VM. Click on the “Next button.

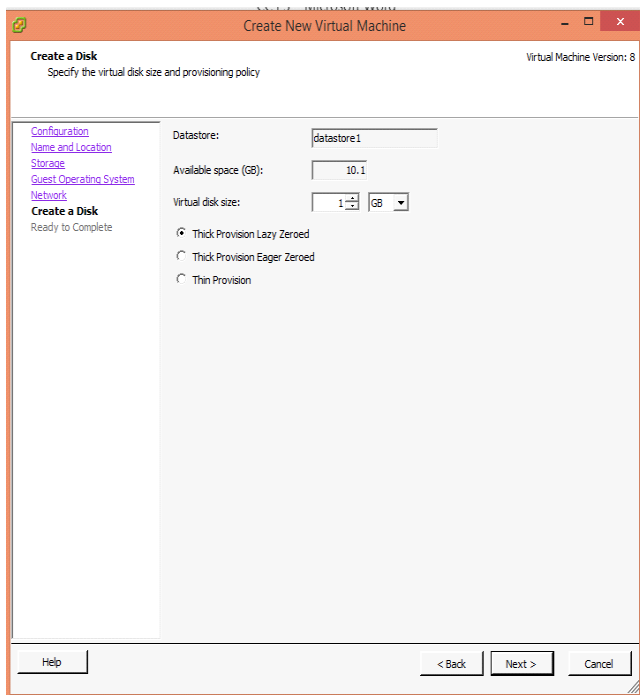
In the next screen keep the settings default for Storage and click on “Next.”



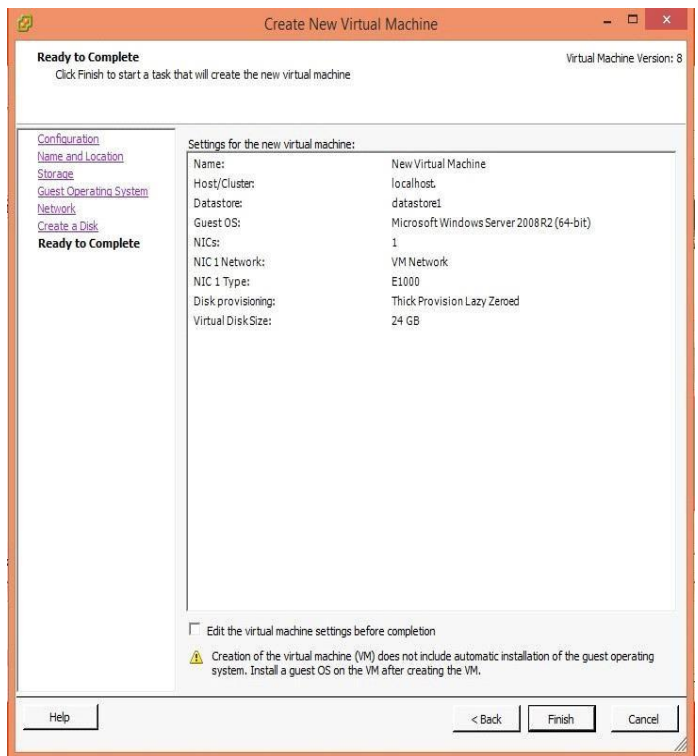
**Step24:** Select the Guest OS as Windows and Version as “Microsoft Windows Server 2008 R2 (32- bit)”. And Leave the Network settings default and click on “Next.”



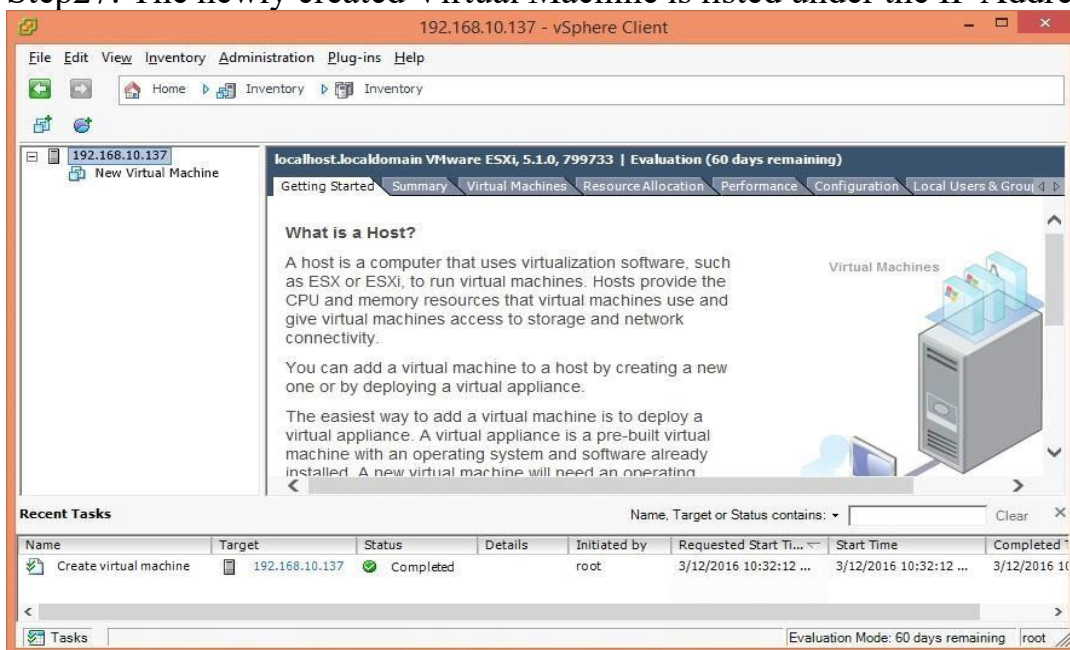
Step25: Choose the Disk space (depending on the available space of user's system. Here it is 1GB) of the VM in GB. Click on the "Next" button.



Step26: At the final screen click on "Finish" button.

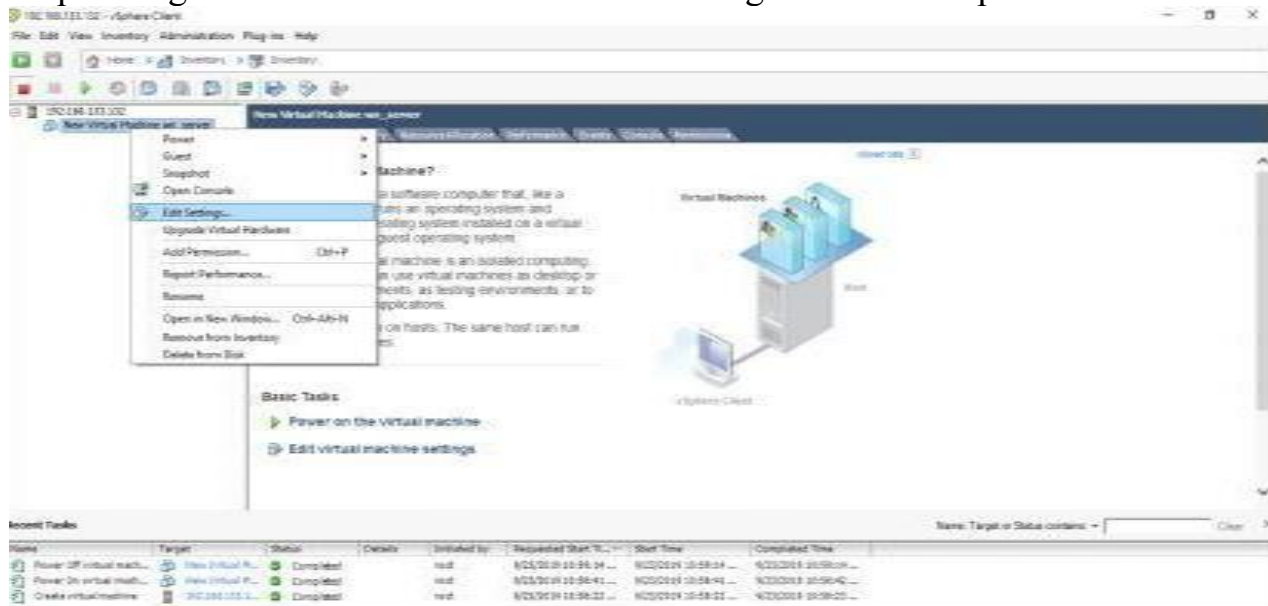


Step27: The newly created Virtual Machine is listed under the IP Address.

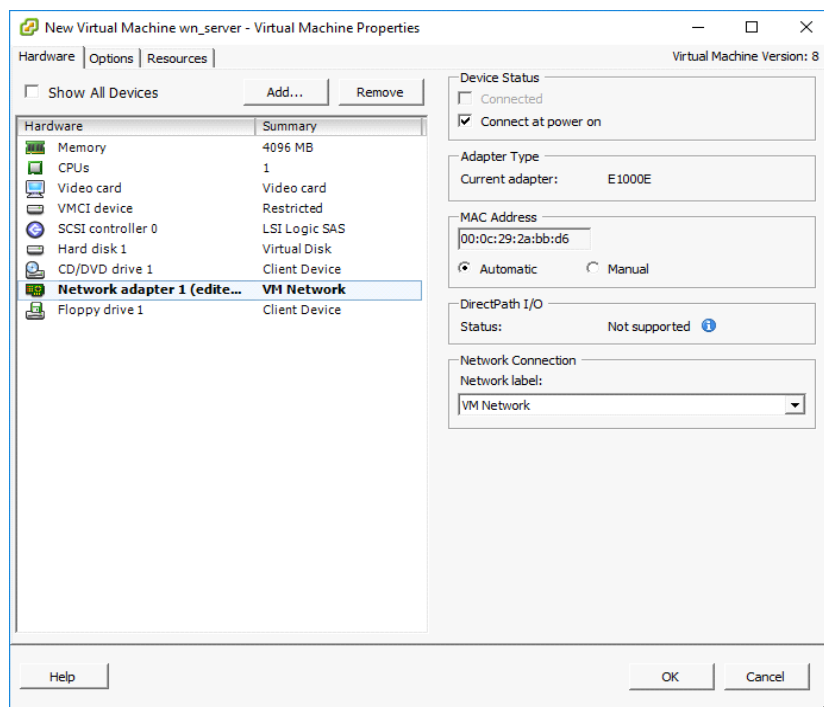




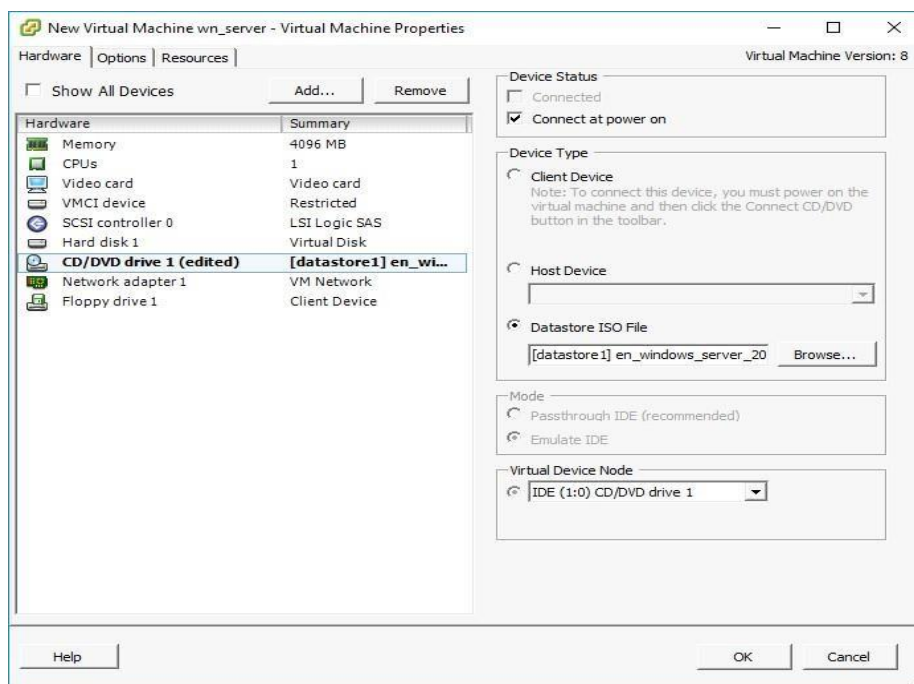
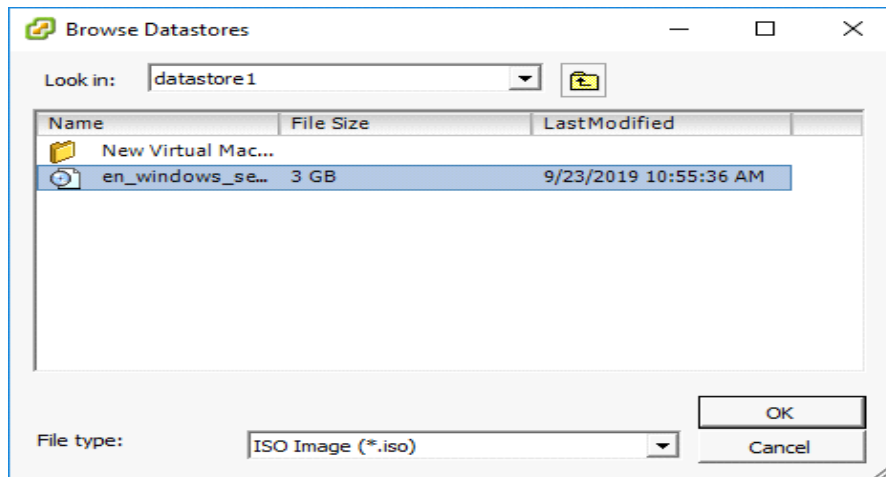
Step28: Right click on virtual machine Edit settings Network adapter.



Step29: Right click on virtual machine Edit settings Network adapter” Check on Connect at power on.”



Step30: Right click on virtual machine Edit settings CD/DVD Drive Check on Datastore ISO file and browse the iso.



Step31: “Check on Connect at power on.”

## Power on VM

